



# 165 Line

Pneumatic gluing system with metered glue dosing  
for professional and accurate application of PVA



DISTRIBUTOR IN BALTICS:

**PAKARTE LLC**

Phone+372 5656 9482

[pakarte@pakarte.com](mailto:pakarte@pakarte.com)

[www.pakarte.com](http://www.pakarte.com)

making more out of glue



# 0165

## Metered glue dosing system

with 1 glue gun with anatomic grip  
and universal pointed nozzle

for cost-effective and accurate  
applications,  
for professional and efficient  
manufacturing



DISTRIBUTOR IN BALTICS:

**PAKARTE LLC**

Phone +372 5656 9482

[pakarte@pakarte.com](mailto:pakarte@pakarte.com)

[www.pakarte.com](http://www.pakarte.com)

## Pneumatic gluing system with metered glue dosing for professional and accurate applications of PVA

For professional, precise, fast and clean glue application (PVAc), as well as in any other glue application where a controlled, constant and accurate dosing is needed, both for small batches and mass processing operations, aiming to optimize the working process in any gluing station.

For solid wood, timber products and panel processing.

For the furniture and housing industry and the joinery.

The pneumatic control guarantees an always constant amount of glue.

This range of metered gluing systems presents 2 helpful standard adjustments:

- 1) Glue flow/ amount adjustment;
- 2) Glue dispensing time, therefore, open time of the glue gun.

### 165V Glue gun

For applications where it is necessary to apply glue to the length (longitudinally) of the wooden parts, a second version of glue gun is available, suitable, for instance, for dispensing glue on beams, wooden laths with spatulas or cylinders nozzles, or to apply glue into grooves with the proper nozzle for grooves.

Also, for applications where it is necessary to apply glue to the length (longitudinally) of the wooden parts, by effecting a vertical movement, for instance, into slots and similar.

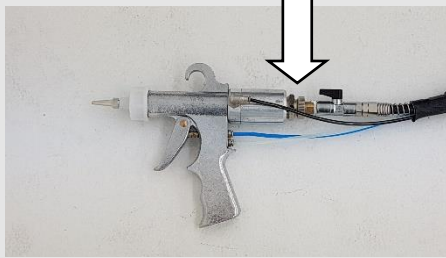


165V

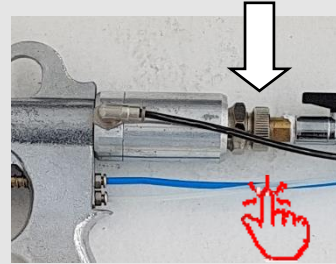


## Dual function system

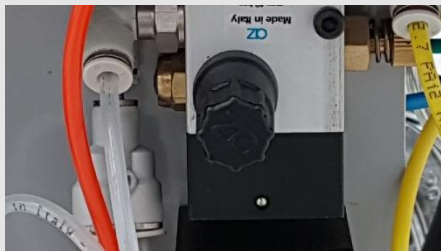
A second version is available, with DF coding, for dual function setting, where it is possible to choose and to select between (1) continuous glue flow and (2) one-shot glue application, with metered dosing.



Glue dispensing gun  
with glue flow control ring



Glue flow control ring  
Detail



Pneumatic timer  
Time adjustment of the glue gun  
which controls the glue dispensing time



2-functions setting switch  
Metered/ continuous flow  
manual controlled

## Features and technical specifications:

- \_ Stainless steel pressurized tank, 12 kg capacity /3.2 US gallons
- \_ Hose set, 3 m
- \_ Glue dispensing gun with universal pointed nozzle
- \_ Glue gun housing (to be kept filled with water)
- \_ Tap adapter for cleaning nozzles after use - included
- \_ Service cart
- \_ Operating pressure, max. 5 bar/75 psi

## Benefits:

- \_ Ready to use, timesaving, easy, clean
- \_ Less waste and more precision than working manually with glue bottles
- \_ Metered, one-shot regulation of glue amount
- \_ Exact and instant glue-application cut-off
- \_ Interchangeable nozzle, standard and custom ones

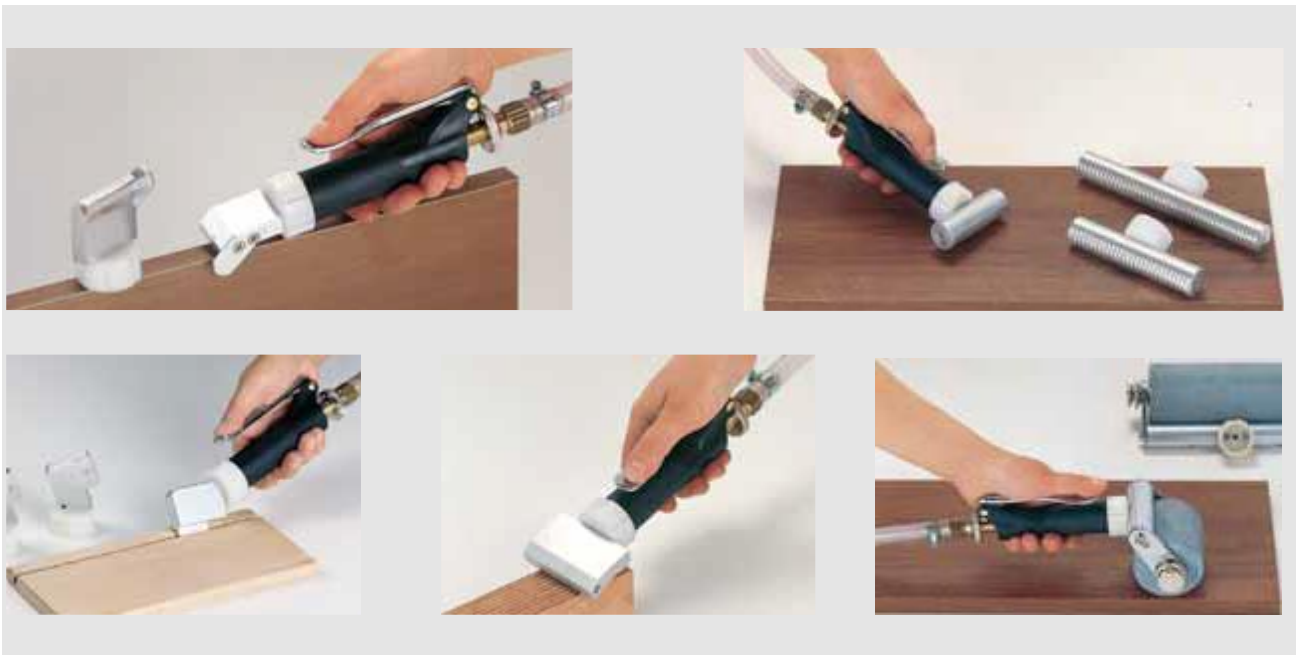
- \_ The tank stays pressurized and ready for use for months
- \_ Pressurized system, minimal cleaning required
- \_ Moveable glue applicator

**Nozzles:**

The range of nozzles that PIZZI offers are also representing a unique benefit.

Nozzles that are the exact contour of your profile, just the right counter-profile, Choosing among the wide range of PIZZI standard nozzles and also custom-made ones according to customers' profile.

All nozzles, standard and special customized, are interchangeable on PIZZI glue guns.



**Options:**

- \_ Gluing system with 2 independent glue guns for 2-man operation (model 0265)
- \_ One-shot metered of glue dosing, pneumatic controlled + continuous glue flow, manual glue dosing (DF coded)
- \_ Stainless steel pressurized tank, 20 kg capacity /5.3 US gallons



## 165 Line

Ready to use, profitable, easy, accurate, timesaving, working efficiently with the best results!

No mess, no waste... there's a difference...

DISTRIBUTOR IN BALTICS:

**PAKARTE LLC**

Phone +372 5656 9482

[pakarte@pakarte.com](mailto:pakarte@pakarte.com)

[www.pakarte.com](http://www.pakarte.com)