

Operating Instructions for Cartridge Preheater



Table of Contents

Product Description	3
General Safety Instructions	4
Start-Up.....	6
Operation / Additional Information	7
EC-Conformity Certificate	8
Exploded View / Spare Parts	9

Dear customer,

the cartridge preheater you purchased will help you to avoid time losses due to the preheating of glue cartridges in the glue gun. Before using the preheater, please read this operating manual thoroughly.

Product Description

Proper Use

In the preheater, the glue is melted in cartridges. Therefore, the preheater should only be used by qualified people. Handling the preheater properly will save you unnecessary accident hazards and problems.

Personal injury or material damage caused by an improper use shall not be the manufacturer's but the user's responsibility.

Technical Data

Connection	230 V / 110 V
Heating capacity	70 W (500 W)*
Capacity	2 cartridges
Cartridges	Ø 47 mm – 310 ml – length 215 mm
Heating time	approx. 15 min. depending on glue type
Temperature control	thermostat
Temperature	fixed adjustment approx. 125°C**
Weight	2500 g

* When gun is cold, power consumption is very high, see brackets.

** Any temperature up to max. 150°C adjustable at works.

General Safety Instructions

User's Care and Diligence

The cartridge preheater has been designed and fabricated according to the applicable harmonized standards and further technical specifications. So, it is state of art and ensures a maximum of safety. This safety, however, can only be achieved in practice, if all necessary measures have been taken. The user of the device shall be obliged to plan these measures and to make sure that they are taken.

In particular, the user shall ensure that

- the cartridge preheater is in working order
- the required personal protective equipment (protective gloves) for the operating personnel is available and used
- the entire operating instructions are in legible condition and available to the operator
- only sufficiently qualified and authorized personnel operates and maintains the gun
- this personnel is regularly instructed in the applicable aspects of operational safety and environmental protection, and knows the operating instructions and, in particular, the safety instructions.

Make the information available:

This operating manual shall be kept on the site of operation. It must be ensured that all persons operating the gun can look into the manual at any time. In addition to the operating manual, the instructions pursuant to the Factory Act and the regulations as regards the use of equipment shall always be at the operator's disposal.

Meaning of the Various Safety Symbols

This operating manual shall give concrete advice as to safety to draw the user's attention to remaining unavoidable hazards. These hazards imply dangers to

- persons
- product and equipment

The symbols used in the operation manual shall, in particular, call attention to the safety instructions!



This symbol indicates that there is, above all, danger to persons, but also to equipment and material.



Caution: Hot surface!

Accident Prevention Regulation VBG 125 - W26

Hot surfaces such as machine parts, tanks or materials, but also hot liquids cannot always be perceived. The utmost caution is advised when this symbol is attached to a component.

Always wear protective gloves when you have to touch hot surfaces.



Wear protective gloves!



Wear safety goggles.






To avoid risk of stumbling lay cable so that it does not cause any risk of stumbling.

Safety Measures in Case of Normal Operation

The instrument must only be used by authorized persons trained and instructed in its use. They have to know the operating instructions and be able to work accordingly.

Prior to each use, check the gun for visible damage and make sure that it is in perfect condition! Advise detected defects to your superior at once!

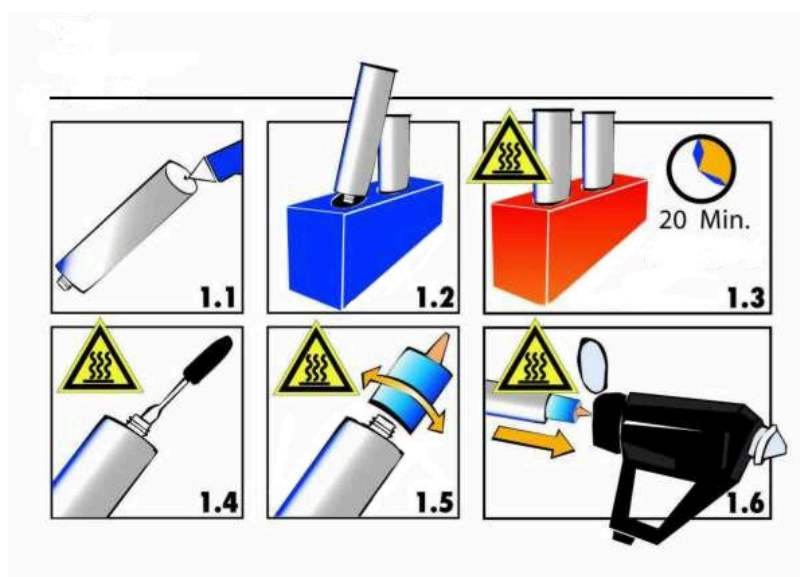




Safety Instructions for the Use of the Cartridge Preheater

- * Never exceed operating temperature of hot melt.
- * **Overheating may lead to decomposition which may affect your health.**
- * **Once the cartridges have warmed up, they are extremely hot.**

Warning: Risk of burning!

- * Never bring the hot cartridge into contact with the cable.
- * **Always wear protective gloves!**
- * **When your skin got into contact with hot glue, immediately cool it down with cold water. Do not try to remove hot melt from the skin first. If necessary, consult a doctor.**
- * **When hot adhesive got into your eyes, immediately cool them under running water for approx. 15 minutes and consult your doctor at once.**
- * **Never lay preheater on its side.**



Handling of the Cartridge Preheater

- 1.1 Before you start warming up the hot melt, prick a small hole into the bottom of the cartridge so as to avoid overpressure build-up.
- 1.2 Always put cartridge in preheater with screw head pointing downward.
- 1.3 Allow approx. 20 minutes (depending on type of glue) for the preheater to warm up.
Caution: Risk of burning!
Please wear protective gloves.
- 1.4 Remove cartridge.
Use a pointed tool (screw driver, knife or the like) to prick a hole into the cartridge outlet.
- 1.5 Screw nozzle adapter incl. nozzle on the screw thread.
- 1.6 Insert cartridge into glue gun and press out hot melt.

Start-up and Operation



To avoid risk of stumbling:

Lay all instrument connections (cables, hoses, and lines) so that they do not cause any risk of stumbling (cable conduits, bridges)!

Make supply connections and settings

Connect cartridge preheater to 230 V (110 V).

- Plug connecting cable into socket with earthing contact.
- Set the flip switch at the casing to ON to switch the preheater on. The lamp signalling readiness for operation will then light up.

Preheating of Cartridge

- Before you start warming up the hot-melt adhesive, prick a small hole in the bottom of the cartridge so as to avoid overpressure build-up.
- Insert cartridges in preheater with screw thread pointing downward.
- **Make sure that the outlet of the cartridge is closed.**

**Warning: Once the cartridge has warmed up, it is extremely hot!
Never work without wearing protective gloves!**

Inserting of Glue Cartridge

Before inserting the cartridge (310 ml) in the glue gun, mount enclosed adapter incl. nozzle, making sure that the cartridge has been opened.



Prick cartridge outlet open (fig. 2.1)



Screw nozzle/nozzle adapter on the cartridge (fig. 2.2)

Allow approx. 20 minutes for the preheater to melt the hot melt, depending on the type of glue.

Only use undamaged cartridges, i.e. cartridges without dents, so that the piston may freely move in the cartridge.



Warning: Risk of burning – use thick rag/glove or the like!

Operating Instructions for Cartridge Preheater



Table of Contents

Product Description	3
General Safety Instructions	4
Start-Up.....	6
Operation / Additional Information	7
EC-Conformity Certificate	8
Exploded View / Spare Parts	9

Dear customer,

the cartridge preheater you purchased will help you to avoid time losses due to the preheating of glue cartridges in the glue gun. Before using the preheater, please read this operating manual thoroughly.

Product Description

Proper Use

In the preheater, the glue is melted in cartridges. Therefore, the preheater should only be used by qualified people. Handling the preheater properly will save you unnecessary accident hazards and problems.

Personal injury or material damage caused by an improper use shall not be the manufacturer's but the user's responsibility.

Technical Data

Connection	230 V / 110 V
Heating capacity	70 W (500 W)*
Capacity	2 cartridges
Cartridges	Ø 47 mm – 310 ml – length 215 mm
Heating time	approx. 15 min. depending on glue type
Temperature control	thermostat
Temperature	fixed adjustment approx. 125°C**
Weight	2500 g

* When gun is cold, power consumption is very high, see brackets.

** Any temperature up to max. 150°C adjustable at works.

General Safety Instructions

User's Care and Diligence

The cartridge preheater has been designed and fabricated according to the applicable harmonized standards and further technical specifications. So, it is state of art and ensures a maximum of safety. This safety, however, can only be achieved in practice, if all necessary measures have been taken. The user of the device shall be obliged to plan these measures and to make sure that they are taken.

In particular, the user shall ensure that

- the cartridge preheater is in working order
- the required personal protective equipment (protective gloves) for the operating personnel is available and used
- the entire operating instructions are in legible condition and available to the operator
- only sufficiently qualified and authorized personnel operates and maintains the gun
- this personnel is regularly instructed in the applicable aspects of operational safety and environmental protection, and knows the operating instructions and, in particular, the safety instructions.

Make the information available:

This operating manual shall be kept on the site of operation. It must be ensured that all persons operating the gun can look into the manual at any time. In addition to the operating manual, the instructions pursuant to the Factory Act and the regulations as regards the use of equipment shall always be at the operator's disposal.

Meaning of the Various Safety Symbols

This operating manual shall give concrete advice as to safety to draw the user's attention to remaining unavoidable hazards. These hazards imply dangers to

- persons
- product and equipment

The symbols used in the operation manual shall, in particular, call attention to the safety instructions!



This symbol indicates that there is, above all, danger to persons, but also to equipment and material.



Caution: Hot surface!

Accident Prevention Regulation VBG 125 - W26

Hot surfaces such as machine parts, tanks or materials, but also hot liquids cannot always be perceived. The utmost caution is advised when this symbol is attached to a component.

Always wear protective gloves when you have to touch hot surfaces.



Wear protective gloves!



Wear safety goggles.



To avoid risk of stumbling lay cable so that it does not cause any risk of stumbling.

Safety Measures in Case of Normal Operation

The instrument must only be used by authorized persons trained and instructed in its use. They have to know the operating instructions and be able to work accordingly.

Prior to each use, check the gun for visible damage and make sure that it is in perfect condition! Advise detected defects to your superior at once!

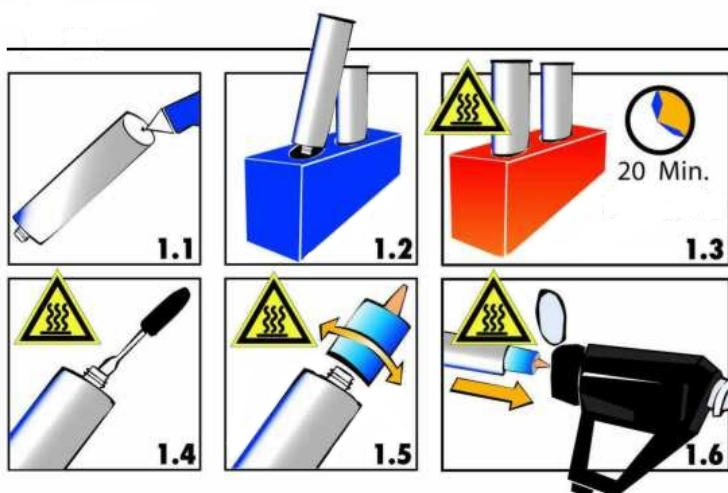


Safety Instructions for the Use of the Cartridge Preheater

- * Never exceed operating temperature of hot melt.
- * **Overheating may lead to decomposition which may affect your health.**
- * **Once the cartridges have warmed up, they are extremely hot.**

Warning: Risk of burning!

- * Never bring the hot cartridge into contact with the cable.
- * **Always wear protective gloves!**
- * **When your skin got into contact with hot glue, immediately cool it down with cold water. Do not try to remove hot melt from the skin first. If necessary, consult a doctor.**
- * **When hot adhesive got into your eyes, immediately cool them under running water for approx. 15 minutes and consult your doctor at once.**
- * **Never lay preheater on its side.**



Handling of the Cartridge Preheater

- 1.1 Before you start warming up the hot melt, prick a small hole into the bottom of the cartridge so as to avoid overpressure build-up.
- 1.2 Always put cartridge in preheater with screw head pointing downward.
- 1.3 Allow approx. 20 minutes (depending on type of glue) for the preheater to warm up.
Caution: Risk of burning!
Please wear protective gloves.
- 1.4 Remove cartridge.
Use a pointed tool (screw driver, knife or the like) to prick a hole into the cartridge outlet.
- 1.5 Screw nozzle adapter incl. nozzle on the screw thread.
- 1.6 Insert cartridge into glue gun and press out hot melt.

Start-up and Operation



To avoid risk of stumbling:

Lay all instrument connections (cables, hoses, and lines) so that they do not cause any risk of stumbling (cable conduits, bridges)!

Make supply connections and settings

Connect cartridge preheater to 230 V (110 V).

- Plug connecting cable into socket with earthing contact.
- Set the flip switch at the casing to ON to switch the preheater on. The lamp signalling readiness for operation will then light up.

Preheating of Cartridge

- Before you start warming up the hot-melt adhesive, prick a small hole in the bottom of the cartridge so as to avoid overpressure build-up.
- Insert cartridges in preheater with screw thread pointing downward.
- **Make sure that the outlet of the cartridge is closed.**

**Warning: Once the cartridge has warmed up, it is extremely hot!
Never work without wearing protective gloves!**

Inserting of Glue Cartridge

Before inserting the cartridge (310 ml) in the glue gun, mount enclosed adapter incl. nozzle, making sure that the cartridge has been opened.



Prick cartridge outlet open (fig. 2.1)



Screw nozzle/nozzle adapter on the cartridge (fig. 2.2)

Allow approx. 20 minutes for the preheater to melt the hot melt, depending on the type of glue.

Only use undamaged cartridges, i.e. cartridges without dents, so that the piston may freely move in the cartridge.



Warning: Risk of burning – use thick rag/glove or the like!

Operation

The glue gun shall only be used/applied according to its intended use. Please see Section "General Safety Instructions".

Improper use of the gun may cause personal injury or material damage.

Non-observance of the safety instructions when working with the gun may lead to serious burns.

Make a functional test acc. to the following list, before you switch on the glue gun:

Check List

- Is the preheater connected to 230 volts (110 V) and the flip switch set to ON?
- Does the lamp signalling readiness for operation light?
- Are the cartridges in the preheater closed?
- Has the heat-up time of approx. 20minutes (depending on the glue type) been observed?

While you are working ...

... do only use undamaged cartridges!

... never lay preheater on its side!

Disposal



Separate disposal of electric and electronic equipment.

Additional Information

Do you have any more questions or requests? We should be glad to help you.

Please contact us by

Phone ++49 0721 / 970 780

Fax ++49 0721 / 705 069

e-mail: info@reka-klebetchnik.de

Our mailing address is:

Reka Klebetchnik GmbH & Co. KG.

Siemensstr. 6

D - 76344 Eggenstein

Germany

Internet: www.reka-klebetchnik.de

EC-Conformity Certificate

The manufacturer:

~~Reka Klimatechnik GmbH & Co. KG~~
~~Siemens AG - E 76344 Eggenstein~~

WWW.PAKARTE.COM

Herewith declares that the design of the:

Cartridge Preheater

is in conformity with following EC directives:

73/23/EEC 89/392/EEC revised
91/368 EEC 89/336 EEC

The following harmonized standards have been applied:

EN 55014 equivalent IEC CISPR 14
EN 60335 equivalent IEC 60335
EN 60204 equivalent IEC 60204
EN 61000 equivalent IEC 61000

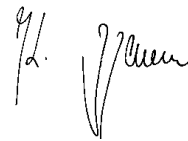
Design modifications influencing the technical data specified in the operating manual and the intended use, thus meaning a considerable change of the device, render this conformity certificate invalid!

There exists a complete technical documentation.

An original version of the operating instructions for the cartridge preheater and a translation in the national language of the user – here English -, are enclosed.

Eggenstein, February 1st, 2002

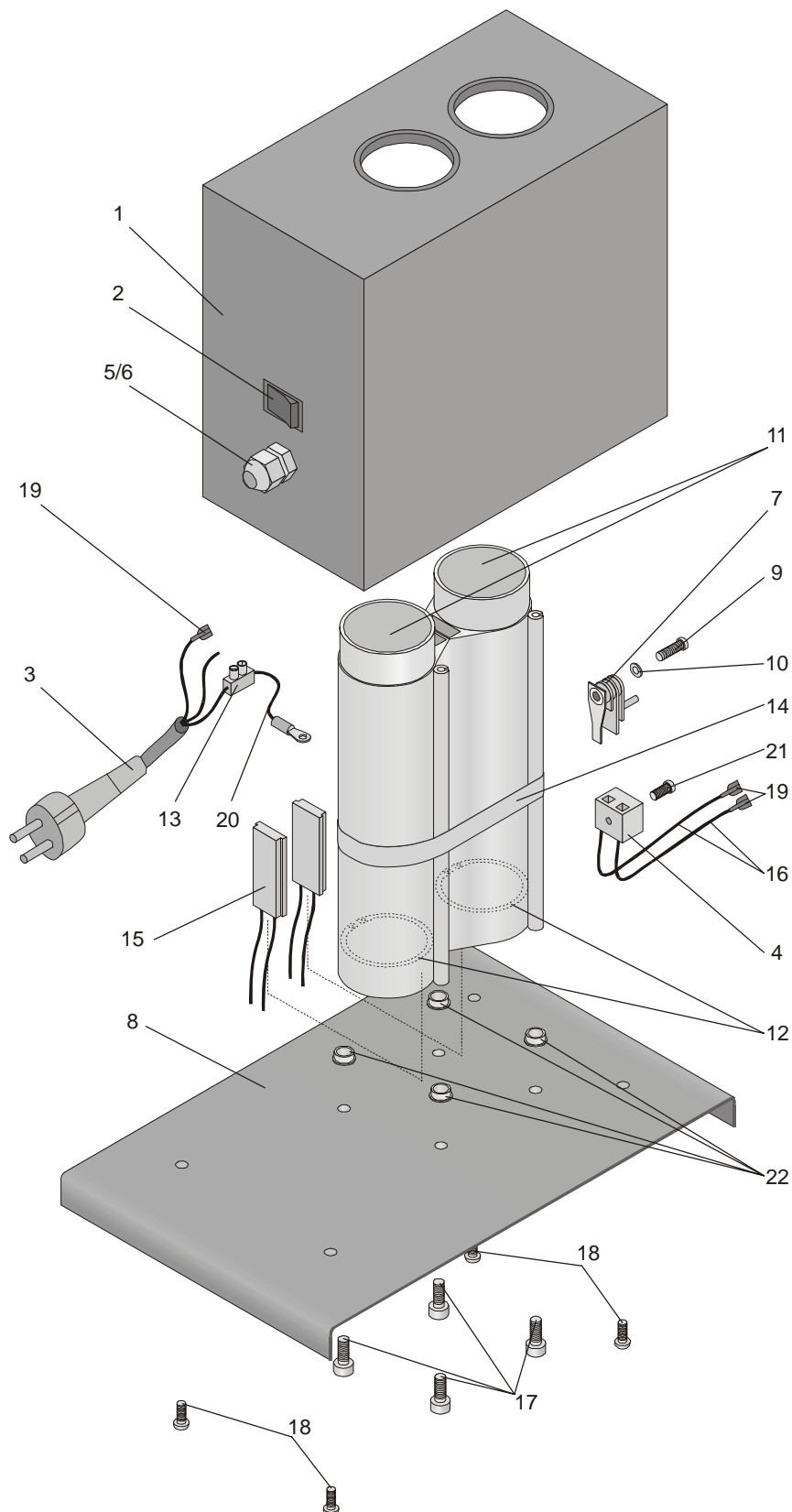
Signature



Karl Coenen / Produktmanager

Ersatzteilliste / Spare Parts
 Kartuschenvorwärmgerät / Cartridge-Preheater

Nr. 5398 (230 V)
 No. 5399 (120 V)



Stand: 04/2005

Legende für Ersatzteile – Kartuschenvorwärmgerät – Nr. 5398 (230 V)
Legend for spare parts – Cartridge Preheater – No. 5399 (120 V)

Pos.	Bestell.Nr.	Artikel-Bezeichnung	Name of article
	Order-No.		
1	10393	Gehäuse	Body casing
2	2918	Schalter	Switch on/off
3	3783	Netzkabel	
	3886		Cord with UL-Plug
4	3868	Keramikklemme	Clamp (Ceramic)
5	3703	PG-Verschraubung	Screwing
6	3704	PG-Gegenmutter	Counternut
7	10177	Thermostat	Thermostat
8	3122	Ablageblech	Plate
9	2532	Schraube M4x25	Screw M4x25
10	3159	Zahnscheibe	Washer
11	10378*	Schmelzblock	Melting block
12	10358	Sicherungsring	Snap Ring
13	2622	Klemmleiste	Terminal block
14	2815	ABA-Klemme	ABA-Clamp
15	10349**	PTC-Heizung 230 V	
	10381**		PTC-Heater 120 V
16	3822	Nickellitze	Cord
17	10401	Schraube M5x16	Screw M5x16
18	3798	Schraube M3x16	Screw M3x16
19	2063	Flachsteckhülse	Sleeve
20	2837	Erdungskabel	Cord
21	3879	Schraube M4x16	Screw M4x16
22	3864	Isolierbuchse	Insulating bush

*Nur in Verbindung mit Nr. 10349 PTC-Heizung 230 V (Nr. 10381 / 120 V) erhältlich.

*Only available in connection with no.10349 PTC-Heater 230 V (no.10381 / 120 V).

**Nur in Verbindung mit Nr. 10378 Schmelzblock erhältlich.

**Only available in connection with no. 10378 Melting block.